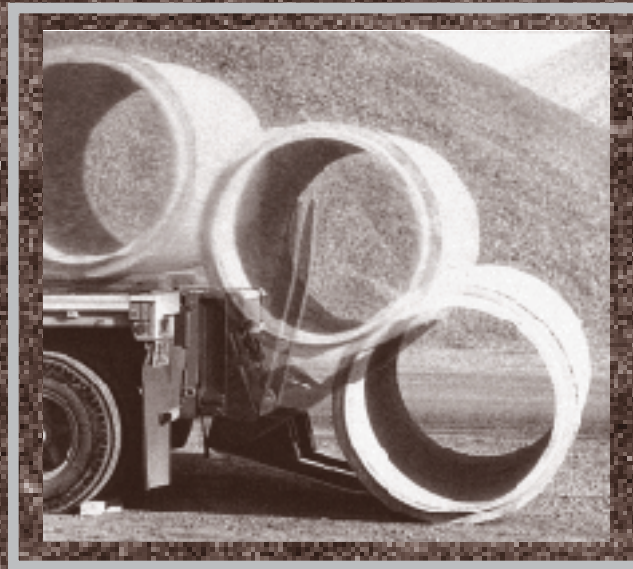


# PIPEMASTER

## CONCRETE PIPE UNLOADER



# The fast and dependable Pipemaster



## Handles pipe gently

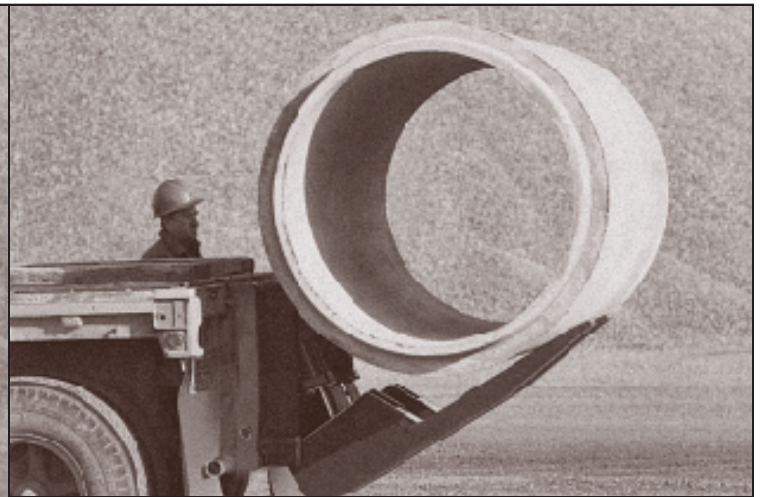
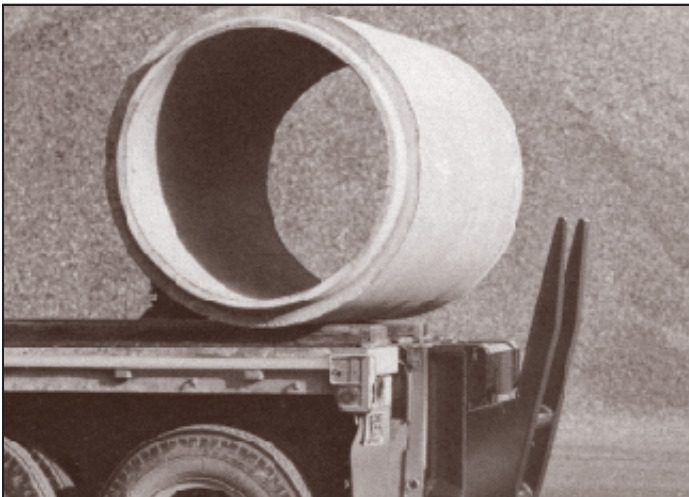
The Pipemaster's smooth hydraulic action virtually eliminates pipe breakage. The pipe is securely cradled between the Pipemaster's frame and fork during unloading; and is gently lowered to the ground at a controlled rate.

## Speeds deliveries

The Pipemaster can unload pipe almost as fast as they can be rolled off the truck...and just the driver does the job! There's no need to send an extra man to the job site or to wait for the contractor's crew or equipment which often results in lengthy delays. The Pipemaster allows trucks to make more deliveries per day...to haul more pipe with your present fleet.

## Simple to operate

One simple control (shown above) sets the hydraulic system of the Pipemaster to unload any size of pipe within the capacity of the unloader. The control is set for the size of the pipe to be unloaded and no further adjustment is required until all pipe of that size are unloaded. Just roll the pipe to the Pipemaster and it automatically unloads and resets for the next pipe.



1. To unload concrete pipe, the pipe is simply rolled to the Pipemaster. The Pipemaster automatically restrains the pipe and securely cradles it between its forks and specially engineered frame. A built-in hydraulic cushion absorbs the initial impact of fast-rolling pipe to protect the pipe and the unloader's components.
2. The weight of the pipe automatically causes the Pipemaster's forks to start lowering. To insure safe unloading, the pipe is securely cradled throughout descent. The speed of descent is infinitely adjustable and is easily set to unload various sizes of pipe.

# Pipemaster also delivers these advantages

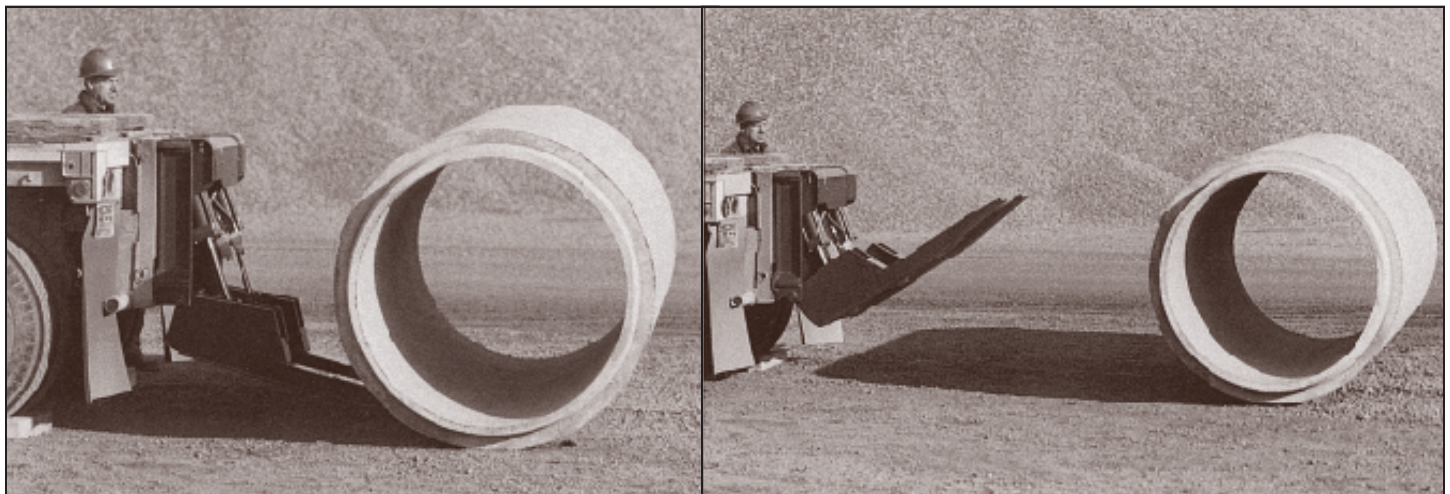
## Economical

The Pipemaster requires no expensive pumps, motors, or external power sources to purchase or maintain. It's a completely self-contained unit that easily mounts on any trailer. The Pipemaster's rugged construction and dependable hydraulic resistance unloading system assures years of trouble-free pipe unloading.



## Compact and portable

The Pipemaster can be used on any trailer equipped with a Pipemaster mounting rack. Just set the Pipemaster in the mounting rack and lock it in place. There's no power hookups or adjustments to make. All Pipemasters can be easily removed from the trailer or switched from trailer-to-trailer to meet daily unloading requirements.



3. When the Pipemaster's forks descend and touch the ground, the pipe is free to roll from the unloader. The Pipemaster's pipe contact surfaces are protected with replaceable abrasion resistant pads to assure years of usage.

## Simple installation

It's easy to equip trailers with Pipemaster Concrete Pipe Unloaders. The only attachment is a stationary mounting rack that is welded to the rear of the trailer. The mounting rack can normally be installed in several hours and can be done by your own personnel. Installation is uncomplicated as no pumps, motors, power hookups or fine adjustments are required. The mounting rack is installed in an out-of-the-way location and does not interfere with other trailer uses.

## Low maintenance

The Pipemaster's rugged construction and tough hydraulic system is designed to withstand the rigors of concrete pipe unloading and has been proven through years of dependable service world-wide. And since the Pipemaster is completely self-contained, there are no troublesome pumps or power sources to service and maintain.

## Wide unloading range

The Pipemaster unloads nearly all the pipe sizes produced by the average pipe plant. Models are available to unload pipe weighing as little as 100 lbs. (45kg) and pipe up to 96" (2400 mm) diameter or 20,600 lbs. (9344 kg).

4. After the pipe is unloaded, the forks automatically reset for the next pipe. Pipe can be unloaded almost as fast as they can be rolled off the truck.

# Pipemaster

## Concrete Pipe Unloaders

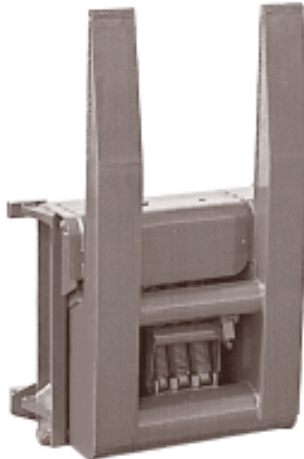


### DropDeck Series

Pipemaster models are available for regular flatbed or drop deck trailers. The DropDeck Series lo-profile design allows the Pipemaster to be used on trailers with heights from 36" to 46". Air-ride trailers should be equipped with controls located near the Pipemaster unloader to raise and lower the trailer bed for extreme conditions.

### Model 100

The Model 100 is the Pipemaster most widely used by concrete pipe manufacturers and fleet owners. It can unload pipe as small as 12" (300mm) diameter or 180 lbs. (82 kg); and pipe up to 84" (2000mm) diameter or 11,000 lbs. (4990 kg). It can unload such pipe sizes as 60" x 8' (1500mm x 2.5m), 72" x 6' (1800mm x 1.8m), and 84" x 4' (2000mm x 1.2m) within the weight limit.



#### SPECIFICATIONS:

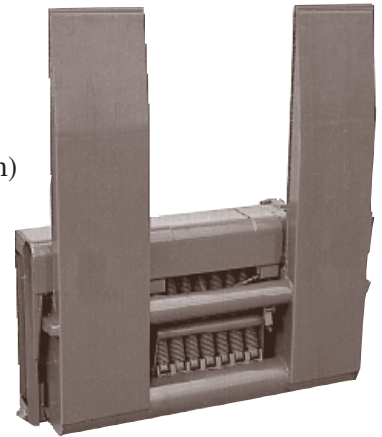
Maximum capacity: 11,000 lbs (4990 kg)  
 Weight: 840 lbs. (381 kg)  
 Height: 58 3/4" (149.2 cm)  
 Width: 42" (106.7 cm)  
 Depth: 17 3/4" (45.2 cm)

#### DropDeck Series:

Maximum capacity: 11,000 lbs (4990 kg)  
 Weight: 1,090 lbs. (495 kg)  
 Height: 56" (142.2 cm)  
 Width: 41 3/16" (104.7 cm)  
 Depth: 26 1/2" (67.3 cm)

### Model 206

The Model 206 is the largest Pipemaster available. It can unload pipe weighing as little as 500 lbs. (227 kg) and pipe up to 96" (2400 mm) diameter or 20,600 lbs. (9344 kg). It can unload such pipe sizes as 84" x 8' (2000 mm x 2.5m), and 96" x 6' (2400 mm x 1.8m) within the weight limit.



#### SPECIFICATIONS:

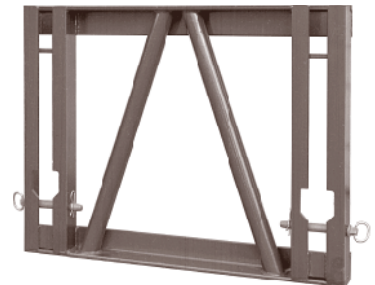
Maximum capacity: 20,600 lbs (9334 kg)  
 Weight: 2,250 lbs. (1021 kg)  
 Height: 68 3/4" (174.6 cm)  
 Width: 70 1/2" (179.1 cm)  
 Depth: 17 3/4" (45.2 cm)

#### DropDeck Series:

Maximum capacity: 20,600 lbs (9334 kg)  
 Weight: 2,340 lbs. (1062 kg)  
 Height: 64" (162.6 cm)  
 Width: 70 5/8" (179.4 cm)  
 Depth: 30" (76.2 cm)

### Model IM Mounting Rack

The Model IM Mounting Rack installs to the rear of the trailer and is interchangeable for use with both the model 100 and 206 Pipemaster Unloaders. The Model DD Mounting Racks are used with the DropDeck Pipemaster Unloader Series for 40" height trailers. Special mounts are available for lower than 40" height trailers.



#### SPECIFICATIONS:

Weight: 180 lbs. (82 kg)  
 Length: 42 5/8" (108.3 cm)  
 Height: 32 1/4" (81.9 cm)  
 Depth: 3 1/2" (8.9 cm)

#### DD Models

Weight: 166 lbs. (75.3 kg)  
 Length: 42 5/8" (108.3 cm)  
 Height: 27 3/4" (70.5 cm)  
 Depth: 3 1/2" (8.9 cm)

## Pipemaster Corporation

Highway 61 South  
 Mediapolis, Iowa 52637 USA  
 319-394-3197 • Fax 319-394-3977  
 CALL TOLL-FREE 800-626-1451

# 2000 S E R I E S

To improve the operation and performance of the Pipemaster Concrete Pipe Unloader, the new Series 2000 Pipemaster has been developed. The Series 2000 Pipemaster features several new design benefits, including:

- *A new integral relief/flow control hydraulic manifold system that eliminates over 20 hydraulic connections for simpler maintenance and improved dependability.*
- *New replaceable abrasion resisting pads for unloader-to-mounting rack wear points in addition to the present concrete pipe-to-machine replaceable wear pads.*
- *Strengthened unloading forks and reinforcement of high wear areas for increased durability and longer operating life.*

The new Series 2000 Pipemaster Concrete Pipe Unloader is now being shipped in place of the previous Model 100 and 206 unloaders. Series 2000 Pipemasters directly mount to your existing IM and SM Mounting Racks and most of the machine parts are interchangeable with the previous models.



## Updated Series 2000 Pipemaster Models

<i>Replaces the Model 100</i>	<b>Model 2100</b> <i>Standard Style</i>	<b>Model 2100-D</b> <i>DropDeck Style</i>
Max. Capacity:	11,000 lbs (4990 kg)	11,000 lbs. (4990 kg)
Weight:	840 lbs. (381 kg)	1,090 lbs (495 kg)
Height:	58-3/4" (149.2 cm)	56" (142.2 cm)
Width:	42" (106.7 cm)	41-3/16" (104.7 cm)
Depth:	17-3/4" (45.2 cm)	26-1/2 (67.3 cm)
<i>Replaces the Model 206</i>	<b>Model 2206</b> <i>Standard Style</i>	<b>Model 2206-D</b> <i>DropDeck Style</i>
Max. Capacity:	20,600 lbs (9334 kg)	20,600 lbs. (9334 kg)
Weight:	2,250 lbs. (1,021 kg)	2,340 lbs (1,062 kg)
Height:	68-3/4" (174.6 cm)	64" (162.6 cm)
Width:	70-1/2" (179.1 cm)	70-5/8" (179.4 cm)
Depth:	17-3/4" (45.2 cm)	30" (76.2 cm)

### **PIPEMASTER CORPORATION**

506 South Wapello Street  
 Mediapolis, IA 52637 USA  
 Phone 319.394.3197 Fax 319.394.3977