

Follow the pursuit of  
**Pipemaking Excellence**



**Hawkeye Pedershaab**  
Concrete Technologies Worldwide™



**HawkeyePedershaab**  
Concrete Technologies Worldwide™



The short story ...

### **HawkeyePedershaab from 1915-2018**

HawkeyePedershaab is the world's leading supplier of machines for concrete products.

The company holds a leading global market position and export its products to well over 90 countries around the world.

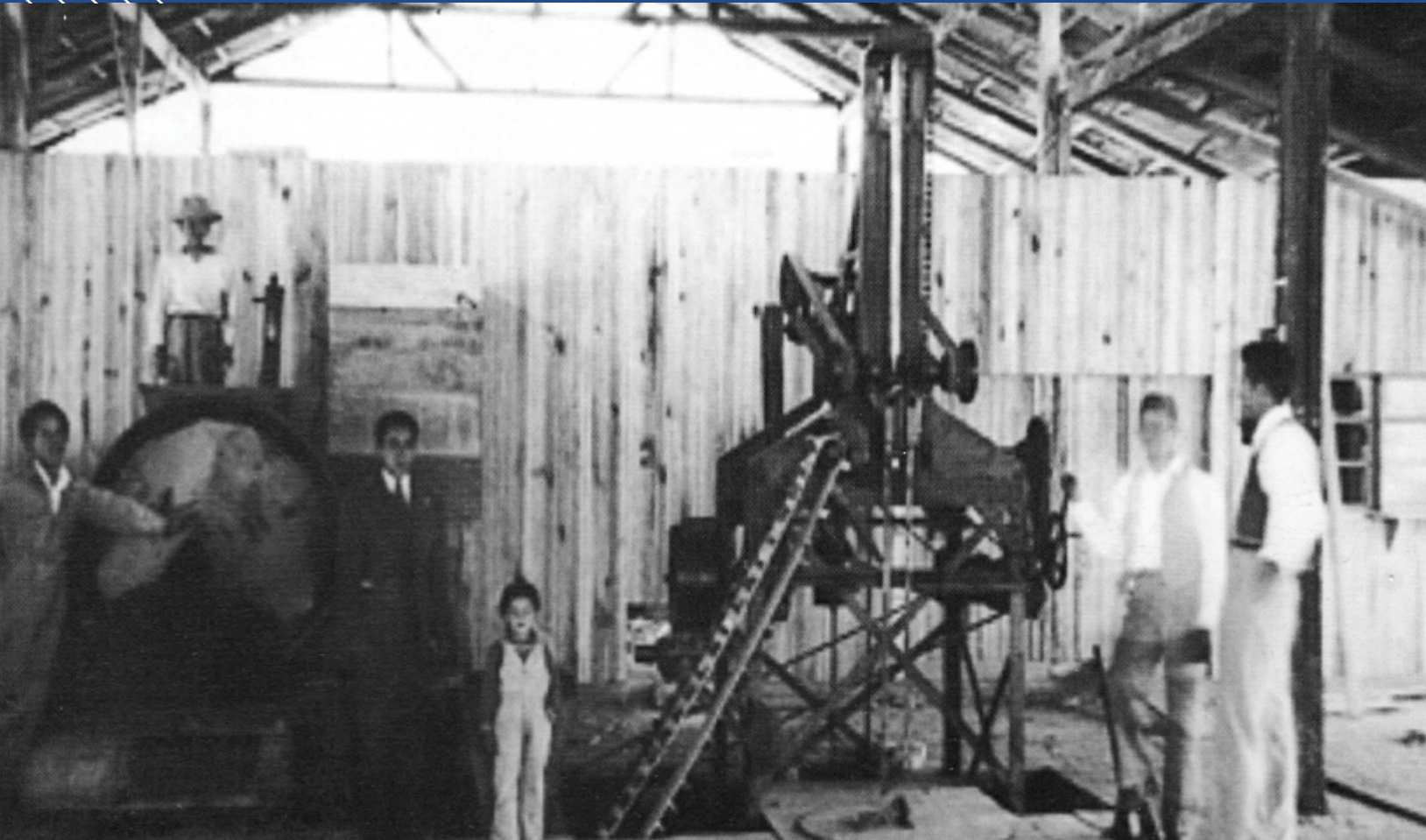
Hawkeye was found in 1949 by Hank Schmidgall to manufacture concrete pipes and blocks. The factory was located in Morning Sun, IA. Hank Schmidgall had previously worked at his father's pipe factory in Hancock, MN along with eight other siblings. In 1959 Hawkeye moved to Mediapolis, IA.

The history of Pedershaab dates back to 1877 when Blacksmith Peder Nielsen started his first company in the Northern part of Denmark. Years later, in 1915 all activities regarding the production of concrete machines were consolidated in a separate company under the name of A/S Pedershaab Cementindustri Maskinfabrik.

In 2008 Hawkeye and Pedershaab merged and joined forces under the name HawkeyePedershaab. The company has headquarters in Mediapolis, Iowa, USA and Brønderslev, Denmark.

In 2012 HawkeyePedershaab did JV with India's fastest growing concrete equipment maker Apollo Infratech Pvt. Ltd., Gujarat and formed a JV company Apollo HawkeyePedershaab Concrete Technologies Pvt. Ltd. (India).

In 2018 HawkeyePedershaab announced the formation of Afinitas, a new parent company, which also acquired BFS Betonfertigteilesysteme GmbH, based in Blaubeuren, Germany and New Hampton Metal Fabrication Corp., New Hampton, Iowa. The company has vision of creating a global, comprehensive, customer-oriented infrastructure equipment and service platform.



# INDEX

Pioneers in Concrete Pipe Machinery since 1877

STORY OF HAWKEYEPEDERSHAAB 1915-2018	02
ABOUT APOLLO INFFRATECH GROUP	04
ABOUT APOLLO HAWKEYEPEDERSHAAB CONCRETE TECHNOLOGIES	05
CONCRETE PIPE MAKING MACHINES : CAP 150, CAP 200	06
CONCRETE PIPE MAKING MACHINES : CAP 250, CAP 360	08
DRYCAST MOULDS & ACCESSORIES	10
MBK - CAGE WELDING MACHINES	11
BFS - SPECIALIZED DRY CAST MACHINES	12
SOLUTIONS FOR PRESSURE PIPES	13
WET CAST MOULD EQUIPMENT	14
CURING SYSTEMS	16
PIPE UNLOADER & TURNING YOKES	18
AMIFAST : PRECAST LIFTING DEVICES AND FASTENERS	19
QUALITY	20
SALES & SERVICE NETWORK	21
ACHIEVING ACCOLADES	22
FINISHED PRODUCTS	23



## India's Fastest Growing Concrete Equipment Manufacturer



### Apollo Infratech Group



Apollo Infratech Pvt. Ltd. (AIPL) One of India's largest manufacturers of high quality concrete construction equipment – such as Concrete Batching Plants, Drymix Mortar Plants, Fixed Form Concrete Pavers, Concrete Equipment related spares - provides Indian infrastructure companies international standards and global technological breakthroughs in construction industry.



Apollo Hawkeye Pedershaab Concrete Technologies Pvt Ltd (AHCT) was formed in 2012 between Apollo and world renowned HawkeyePedershaab, USA to manufacture and sell machines to produce concrete pipes, manhole systems and box culverts with vertical cast vibration technology.



Apollo Carmix Equipments Pvt Ltd (ACEPL) was formed in 2013 between Apollo and Carmix, Italy - a pioneer in the field - to manufacture and sell self-loading mobile concrete mixers in India to produce high-quality and cost-effective concrete at any job site.



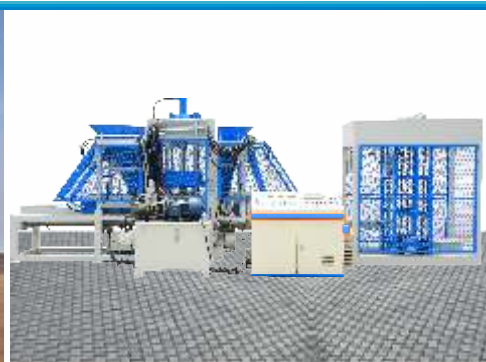
Apollo Zenith Concrete Technologies Pvt Ltd (AZCT) was formed in 2018 between Apollo and Zenith - a world renowned group manufacturing Block making machines from Germany. These block making machines can produce Hollow Blocks, Solid Blocks, Colored Pavers, Fly ash bricks, Grass bricks and Kerb stones.



Aptec Equipment Pvt. Ltd. is a road equipment manufacturing division of larger Apollo Infratech Group. Producing Drum Mix Plant, Wet Mix Macadam Plant, Mechanical Paver, Sensor Paver, Curb Paver, Bitumen Sprayer, Hydraulic Broomer of utmost excellence.



Parker Plant India Pvt Ltd (PPIPL) was formed in 2021 between Apollo and Parker Plant Pvt Ltd of UK - a world renowned group manufacturing Asphalt Batch Plants and related equipments since 1911. This JV Company manufactures various Parker equipment starting with Asphalt Batchmix Plants of all capacities in a newly created state-of-the-art manufacturing facility spread across 11 acres near Mehsana, Gujarat.



## Solutions To Make World Class Concrete Pipes, Manholes, Box Culverts & U-Drains



### Apollo HawkeyePedershaab Concrete Technologies Pvt. Ltd (AHCT)

Sensing the need of technological advancement and cost effective solutions in the infrastructure industry of India, Apollo Infratech did a Joint Venture with HawkeyePedershaab - USA in the name of Apollo HawkeyePedershaab Concrete Technologies Pvt. Ltd (AHCT) to offer wide spectrum of machines for manufacturing Concrete Pipes, Lined Pipes, Jacking Pipes, Manhole Systems, Box culverts and allied products to the Indian customers using vertical cast vibration technology.

HawkeyePedershaab's primary brands include Hawkeye Group (founded in 1949) and Pedershaab Concrete Technologies (founded in 1877). HawkeyePedershaab - USA is the leading global manufacturer of capital equipment for the production of concrete pipes and manholes. With operations in Mediapolis, Iowa and Brønderslev, Denmark, Hawkeye offers a full range of customer solutions for manufacturers of concrete pipes, manholes and other precast products ranging from stand-alone production machines to fully automated plants incorporating the latest robotics and control technology.

In India, the joint venture AHCT has a manufacturing facility located strategically in the growth hub of India - Gujarat. It has an in-house design department equipped with the latest 3D modeling software to design the machines and moulds as per IS 458:2021 Standards. With the state-of-the-art facility, equipment, specialized tools & proprietary fixtures, the company manufactures products as per national and international standards.

Adhering to the quality policy of the company, stringent quality control measures are taken at every stage of manufacturing. Supervision, technical assistance and expert guidance are provided by the HawkeyePedershaab engineers as and when needed.

At AHCT our goal is simple – to create innovative and appropriate technology for the manufacturers to produce world-class quality concrete products.





## Concrete Pipe Making Machines : CAP 150, CAP 200

CAP series machines from Apollo HawkeyePedershaab are dry cast machine for manufacturing almost any type of high quality concrete products:

- Reinforced and non-reinforced pipes
- Circular and non-circular pipes with a “bell” or in-wall joint
- Lined pipe with PE, HDPE, PVC or GRP
- Jacking pipes
- Box culverts, U-Drains
- Manhole risers
- Cones

### Single and Twin Station Capability

A second production station can be installed initially or added in the future. Second station permits two different product sizes to be produced at-a-time and virtually doubles machine output.

#### Standard Features (CAP 150/200)

- Compaction by synchronized core vibration
- Frequency controlled vibration speed
- Concrete feeding by radial horizontal feeder with rotating chute
- Hydraulic pressing/rocking function
- Demoulding by overhead crane
- Powered pivot for press arm and concrete feeder
- Stationary control panel with PLC control system & digital display

### Vertical Vibrated Casting Technology



### PRODUCTION CAPABILITY

Diameter mm	Reinforced pipe Length=2500mm Pipe/hour	Manhole riser Height=1200mm Units/hour	Manhole riser Height=600mm Units/hour	Box Culverts Length=2000mm Units/hour
300	7	-	-	4
600	7	11	16	4
900	7	9	16	3.5
1200	5	8	14	3
1500	4.5	7	12	2.5
1800	4	6.5	10	2.2
2000	3.5	5.5	8	1.9

### Dimensions (mm)

Model	Circular Pipes	Box Culverts/ Manhole Cones	Max Product Length
CAP 150	300-1500	300-1200	2500
CAP 200	300-2000	300-1500	2500

### Optional Features ( CAP 150/200 )

The CAP 150/200 can be supplied with a number of add-on features to make operations and handling even easier and improve production in general.

These include:

- Lifting hole equipment
- Pneumatic equipment for casting of lined pipe
- Elevating system
- Top ring (header) system
- Double casting stations
- 3 Meter length
- Quick relocated platform / pit cover
- Pneumatic pallet locking
- Direct cast-in pin holes for step holes or inserts





## Concrete Pipe Making Machines : CAP 250, CAP 360

CAP series machines from Apollo HawkeyePedershaab are dry cast machine for manufacturing almost any type of high quality concrete products:

- Reinforced and non-reinforced pipes
- Circular and non-circular pipes with a “bell” or in-wall joint
- Lined pipe with PE, HDPE, PVC or GRP
- Jacking pipes
- Box culverts, U-Drains
- Manhole risers
- Cones

### Single and Twin Station Capability

A second production station can be installed initially or added in the future. Second station permits two different product sizes to be produced at-a-time and virtually doubles machine output.

### Standard Features (CAP 250/360)

- Electrically driven, synchronized VIHY core vibration system with oil-lubricated bearings.
- Frequency controlled vibrator speeds.
- Concrete feeder with belt distributor for direct filling of all pipe diameters.
- Hydraulically operated pressing/rocking device for forming spigots, with mechanical pipe length control.
- Hydraulic power pack to drive the concrete feeder, the pressing/rocking device and any given hydraulic features on the machine.
- Mechanical elevation system to accommodate different product lengths.
- Stationary Panel with PLC control system and digital display.
- Pit cover plates incl. stairway to the pit for easy access to the machine and the mold.
- Safety system for compliance with EU standard requirements.
- Laser fine filling control with concrete distribution belt.

## Vertical Vibrated Casting Technology







PRODUCTION CAPABILITY

Diameter mm	Reinforced pipe Length=2500mm Pipe/hour	Manhole riser Height=1200mm Units/hour	Manhole riser Height=600mm Units/hour	Box Culverts Length=2000mm Units/hour
300	7	-	-	4
600	7	11	16	4
900	7	9	16	3.5
1200	5	8	14	3
1500	4.5	7	12	2.5
1800	4	6.5	10	2.2
2000	3.5	5.5	8	1.9
2500	2.5	4	5	1.5
3000	1.4	2	3	1.2
3600	0.9	1.5	2	-

Dimensions (mm)

Model	Circular Pipes	Box Culverts/ Manhole Cones	Max Product Length
CAP 250	300-2500	300-2000	2500
CAP 360	600-3600	600-3000	2500

Optional Features ( CAP 250/360 )

The CAP 250/360 can be supplied with a number of add-on features to make operations and handling even easier and improve production in general.

These include:

- Top ring (header) system
- Lifting hole equipment
- Pneumatic equipment for casting of lined pipe
- Double casting stations
- 3 Meter length
- Quick relocated platform / pit cover
- Pneumatic pallet locking
- Direct cast-in pin holes for step holes or inserts



## Drycast Moulds & Accessories

A concrete product can only ever be as good as the mould it was made in – words to live by and trust when it comes to mould equipment. ApolloHawkeyePedershaab's vast experience coupled with our engineering and manufacturing abilities, enables the supply of precise, robust and long-lasting moulds, able to produce all types of precast concrete products like pipes, manholes and box culverts. We supply high-quality pallets, headers and set rings, used to form the ever-important joints on the produced precast concrete products.



Manhole Mould



Pipe Mould



Box Mould



Pipe Pallet



Pipe Set Rings



Box/U-Drain Pallet & Header



Modular Form Equipment for  
Box Culverts / U-Drains



# Cage Welding Machines



With an objective of providing the best and the most innovative products to the Indian market, AHCT did a Technical Alliance with Germany based group MBK which is one of the best manufacturers of cage welding machine worldwide. Established in 1961, MBK Maschinenbau GmbH is today a global market leader for welding machines for the concrete industry.

The company's conduct is characterized by fair and friendly working relationships between customers, employees and business partners. It's quality management systems are according to DIN EN ISO 9001.

MBK - it not only means the highest level of expertise and experience, but also stands for individualisation and distinctive service performance, beginning with the first design sketch and going all the way to production, installation and finally, after sales service.

## Cage Welding Machine : MBK ISM - 250

**ISM-250-R** - a wire cage making machine for the reinforcement of concrete pipes and manholes, is made in India in accordance with the design of MBK Maschinenbau GmbH, Germany

The machine is suitable for the production of round straight cages as well as round cage with bell.

## Faster way to make quality cage



Production Capability ( Cages of 2500mm length per hour )

Cage Dia. (mm)	Spacing of Winding Wire (mm)												Long. Wire (Nos.)
	40	50	60	70	80	90	100	110	120	130	140	150	
330	10	11	13	15	16	17	18	19	20	21	21	22	9
600	9	10	12	14	15	16	17	18	18	19	20	21	9
900	6	7	8	9	10	11	11	12	13	13	14	14	9
1200	5	6	7	8	9	10	10	11	12	12	13	13	18
1500	4	5	5	6	7	7	8	9	9	9	10	10	18
1800	3	4	5	5	6	7	7	8	8	8	9	9	18
2000	3	4	5	5	6	7	7	8	8	8	9	9	18
2500	2	3	3	4	5	5	5	6	6	6	7	7	18



## Solutions for Special Applications



HawkeyePedershaab has merged with BFS Betonfertigteilesysteme GmbH, based in Blaubeuren, Germany.

BFS develops, designs and produces machines for manufacturing high quality prefabricated concrete products to be used in sewage and waste water systems.

The main activities of BFS GmbH and its Italian branch office, BFS S.r.l., revolve around sophisticated machinery and equipment for production processes with flexible manufacturing capabilities.

The origin of BFS can be traced back to BaumgärtnerMaschinenfabrik GmbH, which was established in 1980 and was purchased by the Casagrande Group (Italy) in 2002. The "Impianti" department at Casagrande was assigned to BFS GmbH and it has since then operated as BFS S.r.l. The custom built equipment and machinery allow the production of a wide variety of concrete products and the company's close cooperation with individual customers creates an efficient, demand-oriented production platform for high-quality products. BFS develops and delivers modular systems from semi-automated single machine units to fully automated turnkey production plants.

State-of-the-art equipment and know-how has allowed BFS to establish itself in the national and international market as the innovation engine and technology leader for concrete pipe and manhole production as well as for other prefabricated concrete products for the professional construction of the civil engineering infrastructure.

### SOUVERAEN

The most modern and efficient manufacture of concrete pipes with highest product quality in the **packer head** procedures up to 1600 mm dia.



### KARIBIC

Fully automatic production line for :  
**Manhole rings** and necks up to 1500 mm dia.  
**Manhole bases** up to 1200 mm dia. Road and yard gullies



### MAMMUT ( for big box production )

Vibration table production for specialty products such as **box culverts** and supply line. It can make products with dimensions of up to **6850 x 5200 mm** and an overall height of 1200 mm with a maximum weight of 35 tons.



## Solutions for Pressure Pipes

Water pressure main pipelines are generally projects for which a life expectancy of 100 years is required . A correct approach to best result of these projects involve many engineering activities and disciplines from the survey to the planning of the activities to the structural and hydraulic design.

The 60 years BFS (previously CASAGRANDE) experience in the supply of engineering, machinery, assistance for the manufacturing of concrete pressure pipes and for the pipeline construction can summarized as follow:

- 46 factories installed all around the world for PCCP , RCCP, RCP and PCSP types according to EN , AWWA , JIS Standards
- 15,000 km and more of water pressure pipelines built by using BFS Technology from 600 – 4200 I.D. x 6000 – 8000 mm length with working pressure up to 2 Mpa.
- All pipelines are still operating in very good conditions without particular maintenance costs after many years.

### Types of pressure pipes

#### a) Pre - stressed Concrete Pipes (P.S.C.)

Applications: - Water supply; lift Irrigation and drainage schemes which involve medium pressure.

#### b) Pre - stressed Concrete Cylinder Pipes (P.C.C.P)

Applications: - Water transmissions and distribution pipelines, sewer force mains, cooling water systems and liners for pressure tunnels.





# Innovative Solutions for Wetcast Forms

## Precast Concrete & Its Benefits

- ◆ Precast concrete is a construction product produced by casting concrete in a reusable form (mould) which is then cured in a controlled environment at a factory and transported to the site for construction applications.
- ◆ With precast concrete much reliable forms of construction are possible because studies reveal that...
  - ◆ Precast concrete gets stronger with passing time
  - ◆ Capable of providing longer service life
  - ◆ May require a little or no maintenance at all
  - ◆ Gives consistency in quality & finish
  - ◆ Saves lot of time in comparison to casting at site
  - ◆ Dust, noise, wastage and disruption associated with the concrete production at site in traditional forms (cast-in-situ) of construction are reduced in precast concrete constructions
- ◆ Greater control over raw materials and workmanship together using best equipment at a precast plant ensures better quality, faster delivery and economical constructions.

## Wetcast Forms for U-Drains



## Why Wetcast Forms?

- ◆ In today's modern construction technology Precast elements play a very important role right from a Bridge Girders to a Small Manhole.
- ◆ AHCT offers a wide variety of Wetcast forms for the production of Box culverts, U drains, Manholes & many more products using SCC (Self Compacting Concrete).
- ◆ Whether your application requires individual forms or a fully adjustable system, AHCT can build a solution in the configuration, size, span and rise combination you need. Our expert engineers will gladly develop forms to your custom specifications, saving your time and money.

## Wetcast Forms for Pipes



We provide form work solutions through our family of companies "Afinitas" (HawkeyePedershaab-USA). Afinitas has unmatched depth of expertise to produce precision engineered form work solutions suitable for both Wetcast and Drycast concrete.



## Wetcast Forms for Manhole

In some part of our vast country the Manholes are still being constructed using Bricks & Mortar which is laborious and time taking processes. AHCT offers easy to use wetcast forms for making the manholes as per the Indian Standards (IS 17725 : 2022) which give the consistent quality together with saving of time and labour.

- ◆ Cone Forms
- ◆ Riser Forms
- ◆ Base Forms
- ◆ Slab Forms
- ◆ Joint Rings



## Wetcast Forms for Box Culverts

- ◆ Precast box culverts are drainage systems that exist underneath roads, bridges and other forms of transportation infrastructure to allow for water to flow freely underneath and also used as utility ducts for power cable network.
- ◆ A precise formwork system is necessary to craft quality box culverts & drains that fit unique project specifications.



## Adjustable Box Form System Features

- ◆ Interchangeable core filler panels and jacket filler panels.
- ◆ Minimum box culvert size: 3' (900 mm) x 5' (1500 mm) inside dimension, filler panels to expand to max. of 20' (6000 mm) x 10' (3000 mm).
- ◆ Jacket corners and filler panels are fabricated from 6mm skin pass HR steel plates, heavy steel tube screed rails.
- ◆ Header fabrication is from 6mm skin pass HR steel plates, 12 mm HR top plate and reinforced with 6 mm HR steel gussets.
- ◆ Pallet fabrication is from 6mm skin pass HR plates reinforced with 10 mm HR steel gussets.

## SmartSet Curing Systems



In many markets, a key to the production of the highest-quality concrete products is to ensure the products being produced are able to cure in a heat and humidity controlled environment.

That's why we developed our SmartSet Curing Systems to ensure the proper hydration of the cement and result in the strongest concrete possible.

### **Our SmartSet Systems include:**

- Advanced and basic model direct-fired steam generators
- Kiln control systems
- Air circulation and exhaust systems
- Installation and turnkey services
- Misting and dry burners
- Piping and equipment installation
- Kilns
- Moving floors
- Retrofits and upgrades
- Troubleshooting and preventative maintenance
- Vast parts inventory
- Dedicated technical team and service van



# SmartSet Curing Systems

## Reliable Operation

Operators or automatic controls are continuously changing which valves are open and shut to curing areas to meet production requirements. This changes the load needed for the curing system. SmartSet™ adjusts the firing rate for the curing load automatically to cure your product efficiently and maintain proper temperature control. It automatically adjusts the burner to compensate for upstream changes in water pressure changes.

## Automated Temperature Control

The accurate control of SmartSet's outlet temperature is critical to curing a wide variety of concrete products. A very small change in the water flow results in a large change in outlet temperature. Our system automatically anticipates thermocouple reaction time during outlet temperature changes. SmartSet™ also automatically compensates for any changes in upstream water pressures or water delivery.

\* Ensures accurate viable control over the quality of the cure steam

\* Avoids head losses caused by excess water common in low output-temperature curing systems

## Combustion-Engineered Burner

The heart of the combustion system is the precision burner assembly. The burner is engineered to provide positive flame propagation and flame retention under a wide variety of gas/air ratios and line pressures. Because of this, SmartSet™ starts and burns consistently under varying operating pressures.

## Large Combustion Chamber

The chamber provides the three "T's" of proper combustion: TIME, TEMPERATURE and TURBULENCE:

\* Large enough to provide the TIME to ensure completion of combustion prior to the introduction of water.

\* Lined with refractory, this assures flame TEMPERATURE for proper combustion.

Produces the desired TURBULENCE for a clean burn.

## Auto-Controlled Water Inlet Chamber

Water is introduced in a separate chamber down-stream from the combustion chamber. This eliminates any possibility of water coming into contact with the flame which could cause incomplete combustion and produce dangerous carbon monoxide. The variable, automatically controlled, water supply allows the operator to select and change steam temperature (180° F to 600° F) and humidity (wet fog to dry vapor) to match any curing job with complete reliability.

Block



Prestressed



Precast



Pipe





## Pipe Master : Concrete Pipe Unloader



Fast and dependable way to unload concrete pipe with smooth hydraulic action.

### Standard Features

- ◆ Supplemental Safety Barrier
- ◆ New 50% Wider Forks
- ◆ New Manifold Technology
- ◆ Increased Oil Capacity
- ◆ Visual Oil Gauge

### Model : 3100

It can unload pipe as small as 300mm diameter or 82 kg; and pipe up to 2000mm diameter or 4990 kg. It can unload such pipe sizes as 1500mm x 2.5m, 1800mm x 1.8m, and 2000mm x 1.2m within the weight limit.

### Model : 3206

It can unload pipe weighing as little as 227 kg and pipe up to 2400mm diameter or 9344 kg. It can unload such pipe sizes as 2000mm x 2.5m, and 2400mm x 1.8m within the weight limit.

- ◆ The Pipemaster Pipe Unloader is an efficient, safer, and dependable way to unload concrete pipe.
- ◆ This concrete pipe unloading equipment has a smooth hydraulic action that virtually eliminates pipe breakage.
- ◆ Pipe can be unloaded almost as fast as they can be rolled off the truck.
- ◆ And it's economical.
- ◆ The Pipemaster is completely self-contained and requires no external power source.
- ◆ Its rugged construction makes for years of trouble-free pipe unloading.

## Pipe Lifting & Turning Yokes

Lifting & Turning Yokes allows to lift, transport and tilt cured concrete pipes.

### Model : LT-1400

Outer pipe diameter : 700mm to 2500mm  
Max. pipe weight : 14 Ton

### Model : LT-2500

Outer pipe diameter : 1400mm to 4216mm  
Max. pipe weight : 25 Ton



For over 30 years, Amifast, now part of the Afinitas family of brands, has provided quality products to the industrial and construction industry. Amifast supplies a full line of precast lifting anchors and accessories for the precast concrete industry. Amifast products are built on the quality and value our customers expect and are manufactured to comply with OSHA 1926.704 standards. We know these lifting accessories are critical components of larger products, and we also know the cost of failure is high. That's why we've built our reputation on providing quality concrete accessories when and where you need them.



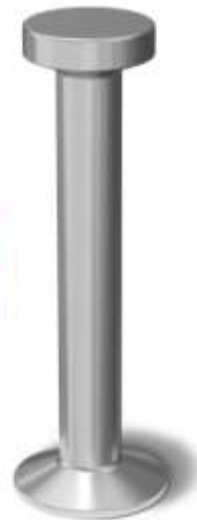
Lifting Eye



Eye Anchors



Recess Former



Dog Bones



Erection Anchors



Utility Box Hardware



Lifting Clutches



Utility Anchors



Lifting Clutches



Lifting Loops



Coil Bolts



Coil Inserts



Flat Steel Anchor



General Purpose Anchors

## Quality

Due to the tireless efforts and customer-oriented policies, Apollo Infratech Group (AIG) enjoys a special status amongst its buyers. Right from the machine manufacturing process to its proper and timely dispatch, AIG personnel are on their toes to make the entire procedure fast yet flawless. But the group's responsibility does not end here. AIG ensures best quality human resource, the group conducts regular product training and updation program. Apart from in house design studio and world class product training facilities, Apollo also implement KAIZEN and 5S to improve working practices and personal efficiency as standard practice.

### Certificates

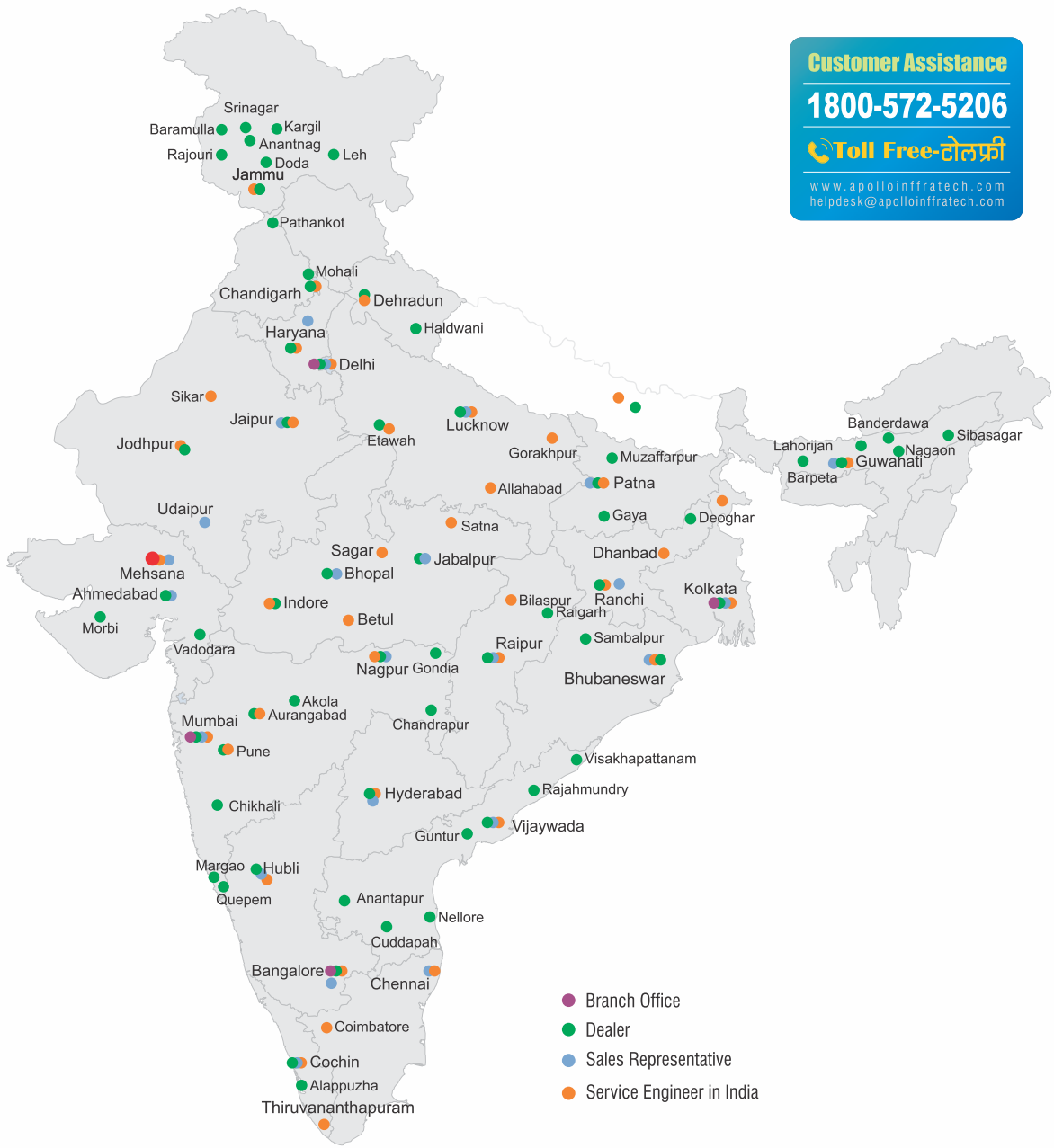




# Sales & Service Network

At Apollo HawkeyePedershaab , we make sure that our customers get quality spare parts and outstanding after sales service through our widespread service network. Apart from our regular services such as installation & commissioning, the group conducts continuous training programs at its world class training facility for its fleet of highly proficient service engineers to provide impeccable after-sale service. Apollo HawkeyePedershaab makes sure the customers' operators go through basic training to handle the equipment safely and look after the elementary trouble shooting.

The group also offers Annual Maintenance Contract (AMC) to safeguard the customers from incurring unexpected expenditure in the event of a breakdown. The AMC takes care of preventive maintenance and parts replacement. It also ensures trouble-free operations and longer life cycles. We have an effective spare part management and forecasting system in-place whereby procurement and warehousing is done.



## Achieving Accolades

We at Apollo Infratech Group believe that if endeavors are pure and honest, you never need to chase rewards and recognitions as they become part and parcel of your journey. While the group has been held in high esteem and extreme trust by its countless satisfied customers, the trust has been manifested by the numerous awards group has won.

- 1) **Outstanding Company in Concrete Equipment**  
EPC WORLD Awards 2012
- 2) **National Achievements Award For Construction & Design**  
Indian Economic Development & Research Association, New Delhi
- 3) **Best LEAN Initiative Award 2011**
- 4) **Visionary Award 2011**  
Vision Foundation
- 5) **Best Company in Construction Equipment 2016**  
CIA World
- 6) **India's Greatest Brand & Leader award for 2017-18**  
Asia One
- 7) **Gujarat Most Promising Brand Award, 2019**
- 8) **Marketing Meister of the year and Prestigious Brands of Asia 2021 Awards** at Global Business Symposium by Herald Global
- 9) **Young Entrepreneur Award by Indian Achievers' Award 2021**
- 10) **National Achievement Award for Construction & Design** Indian Economic Development & Research Association, New Delhi







Make  
**Concrete Pipes, Manholes,  
U-Drains & Box Culverts**  
with our world class concrete machinery







Apollo HawkeyePedershaab Concrete Technologies Pvt. Ltd.  
[an Apollo Infratech Group company]  
Ahmedabad-Mehsana State Highway,  
Village: Rajpur - 382 715, Dist: Mehsana, Gujarat, India  
Ph : +91-90990 86697 | 90991 44644  
sales@ahct.in | www.ahct.in

Produced by naamcomm@gmail.com